

NORTHWEST SLURRY INJECTOR



The latest addition to our manure handling equipment line!! We use the "YETTER AVENGER" Coulters which are especially designed for sod injection. The 25" diameter disc slices cleanly through sod and the 5 degree offset gently opens a trough for slurry to sink into. This system cuts down on run off while actually stimulating older sod fields. Also eliminates strong ammonia odors and increases grass yields.



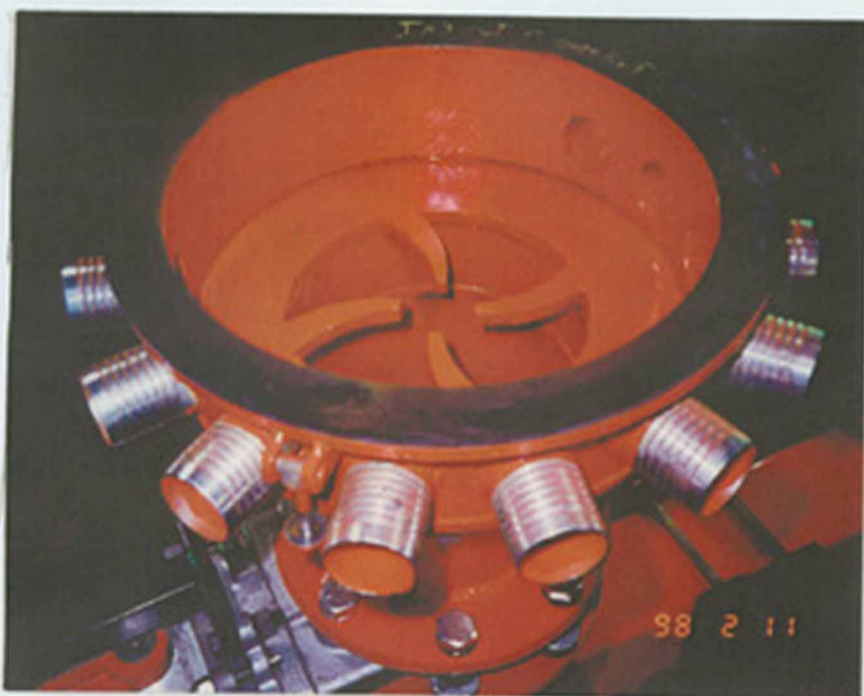
Heavy duty construction with custom features ensure trouble free use and longer life. Our special design Chopper Pump utilizes a Heavy Duty Hydraulic Motor with a pump impeller shaft which is supported by a triple sealed bearing! This special feature which eliminates hydraulic motor failure and oil loss!!

Different width units are available. Starting with a 10' wide and eight coulters, 12' wide and ten coulters, 14' wide and 12 coulters.

Other features include:
6" stainless shut off valve
Road tow kit



THE HEART OF THE NORTH WEST SLURRY INJECTOR



Our special designed chopper pump is powered by a Char/Lyn 2000 motor for eight cutting actions per revolution to thoroughly chop and push slurry through injector tubes!! Cutter fingers and chopper impeller are cut from hardened T-1 steel for constant cutting action and increased pressure to injectors and non stop non clog performance.

WHATCOM MANUFACTURING also carries a complete line of hose, fittings, Hose Reels, Slurry Pumps, and lagoon agitators.

Let us quote you a complete package with machines built in the Northwest. With top quality equipment and service to match we can ease your your Manure Handling Problems!

For Specifications, information.....

PLEASE CONTACT YOUR LOCAL DEALER

